

# HOME

## A CONCEPTUAL FRAMEWORK

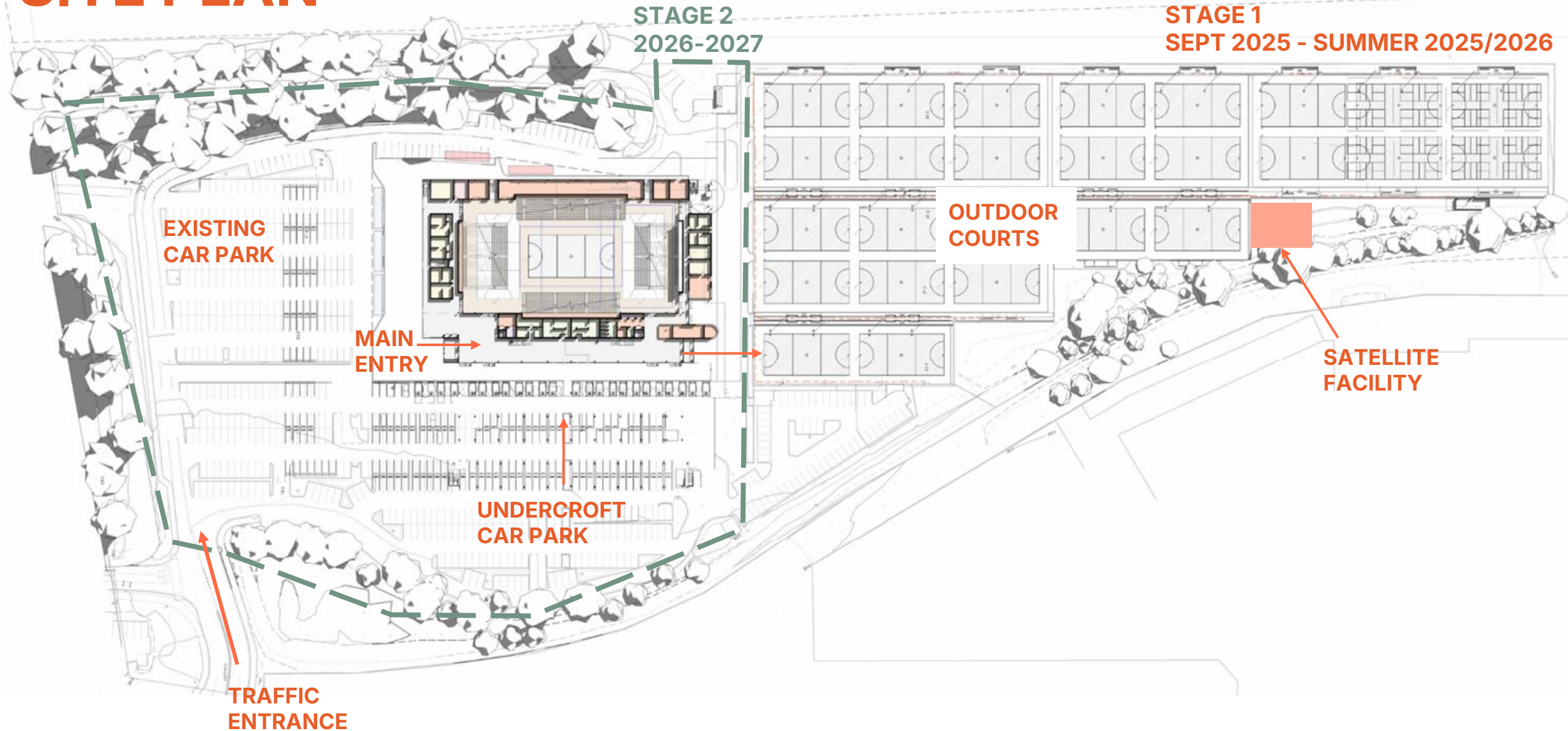
The South Australia Netball Centre is a community shared space, a civic building and a complex sporting facility. The brief defines this facility as a "home" for netball, volleyball and pickleball. The design team has focused on creating a welcoming, accessible, and functional space that fosters a sense of belonging and pride.

The design celebrates the essence of Netball as a predominantly outdoor sport, and therefore adopts strategies that embody transparency, collaboration, and connection to the local context, ensuring the building feels inclusive and representative of the community it serves. The SANC as a "home" is explored through various design strategies:

1. Accessibility and Inclusivity
2. Connection to the Local Context
3. Functionality and Efficiency
4. Sense of Belonging and Pride



# SITE PLAN



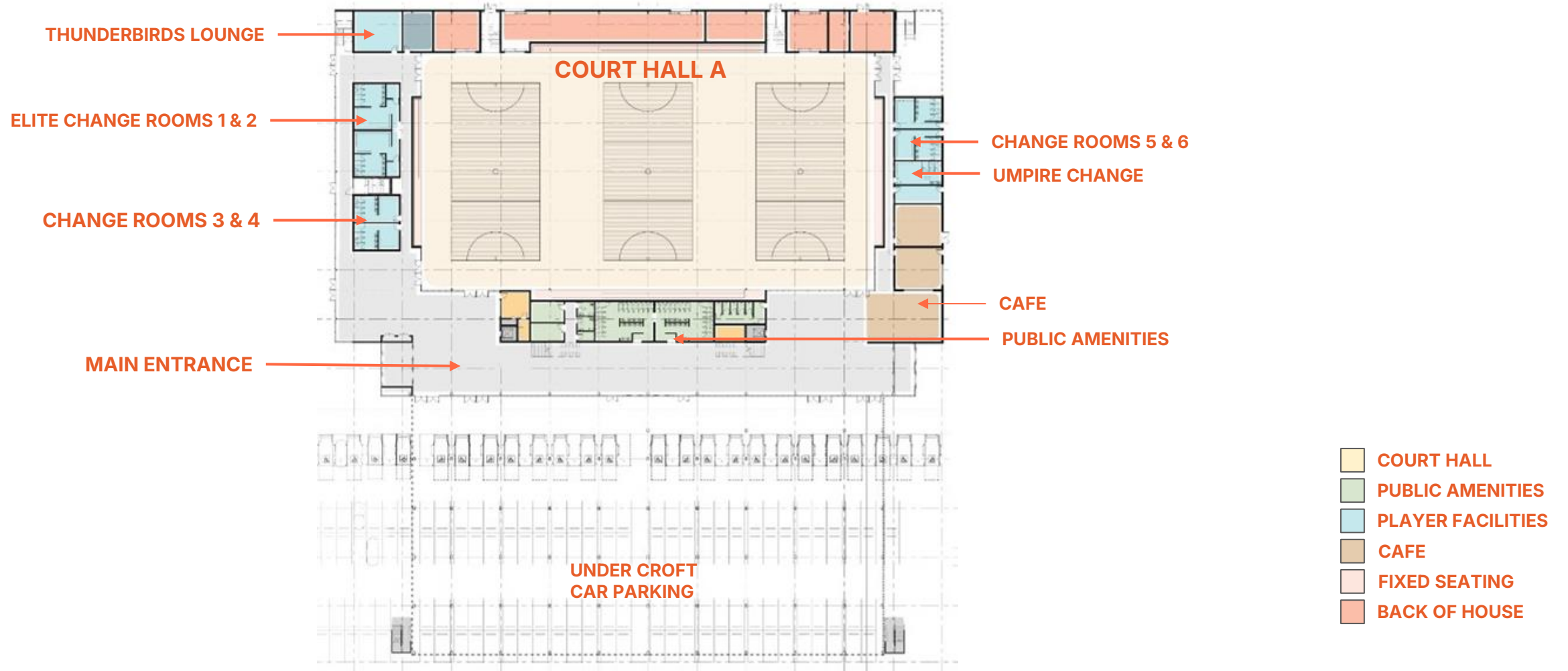


# SITE PLAN

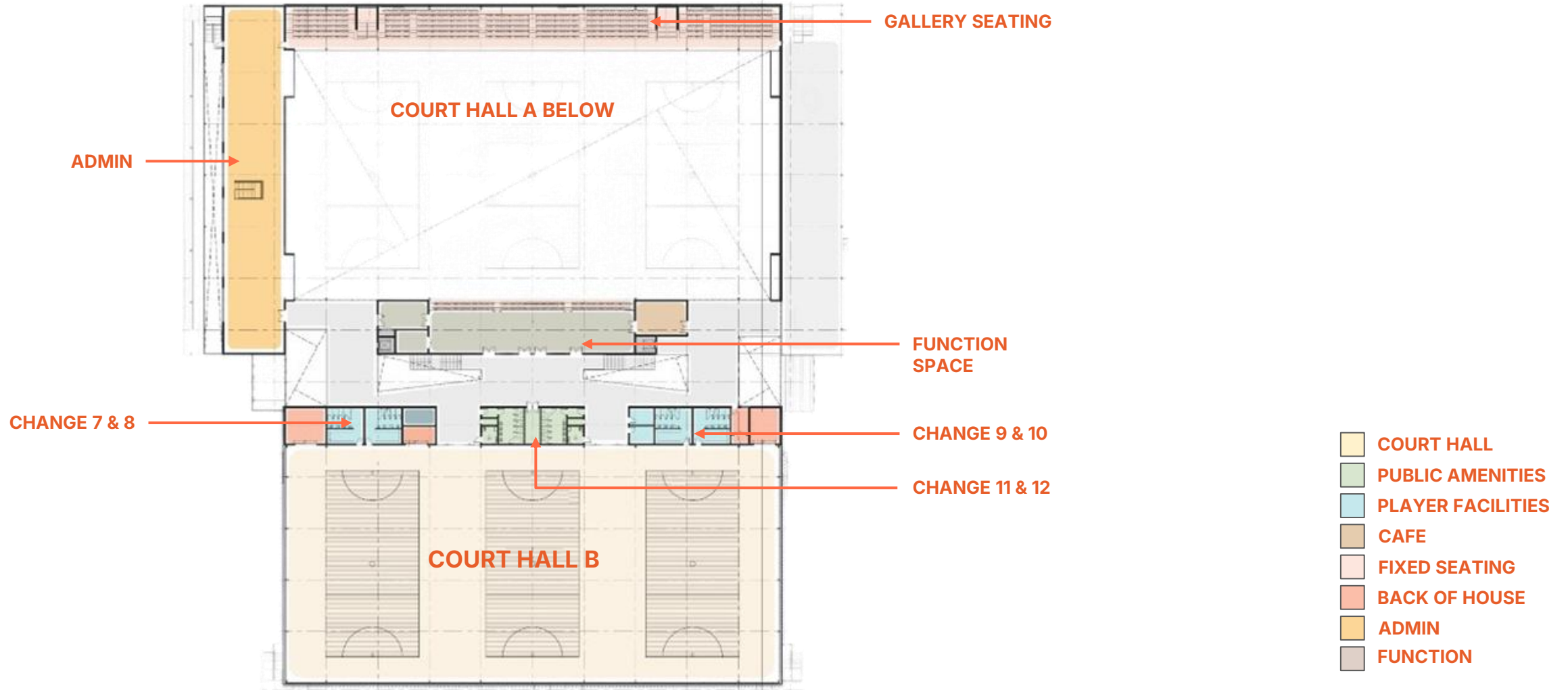




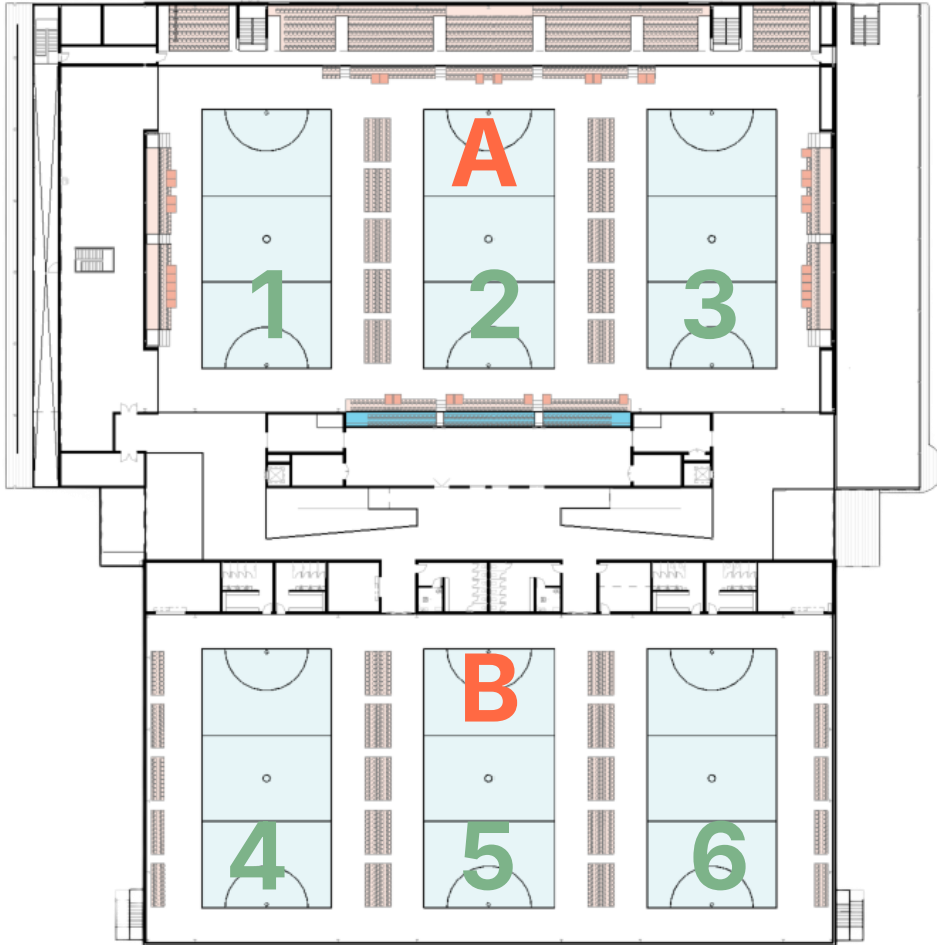
# GROUND FLOOR | PROGRAMMING



# FIRST FLOOR | PROGRAMMING



# NETBALL | COMMUNITY MODE

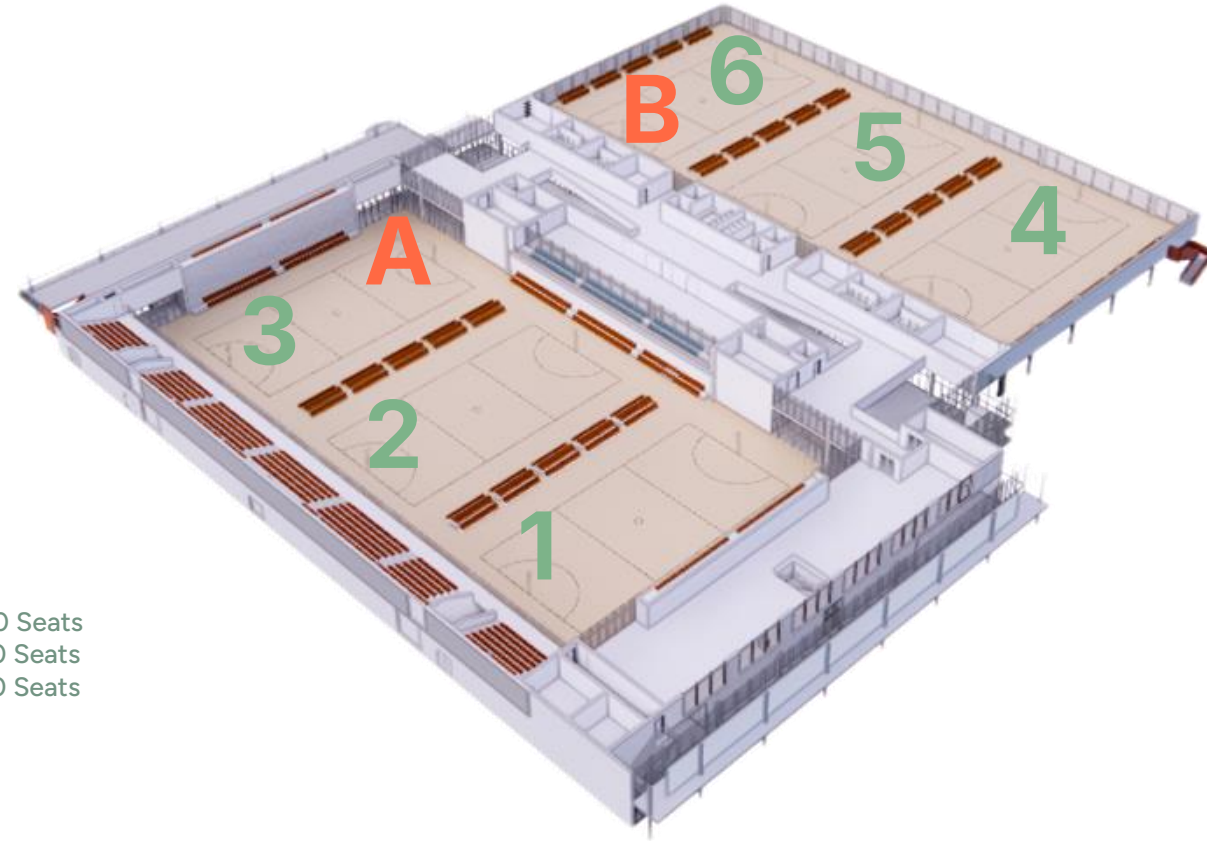


## Court Hall A

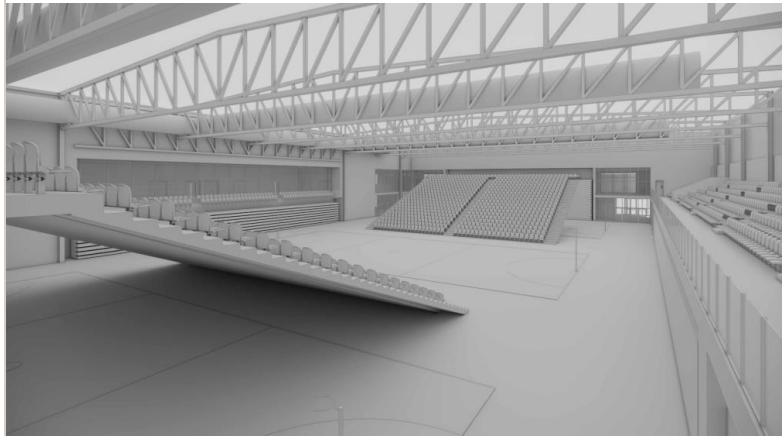
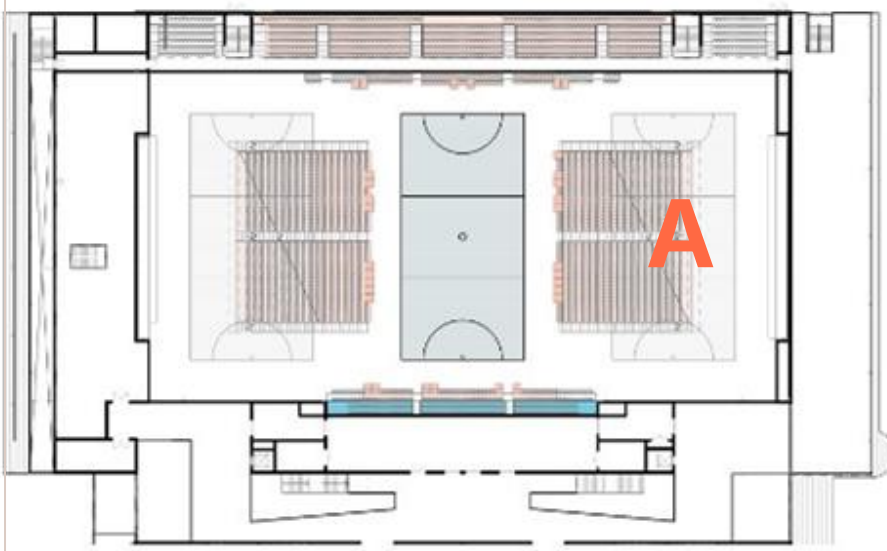
Court 1	460 Seats
Court 2	370 Seats
Court 3	370 Seats

## Court Hall B

Court 4	200 Seats
Court 5	200 Seats
Court 6	200 Seats

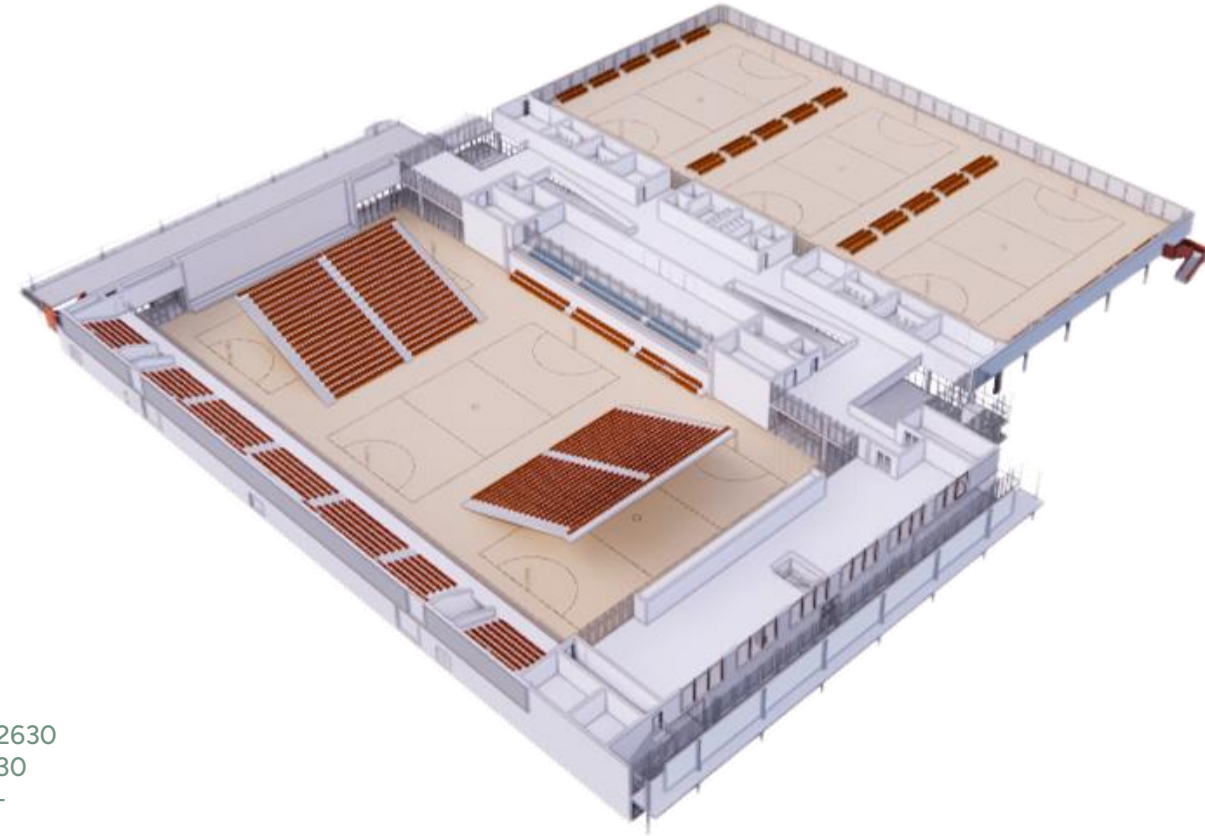


# NETBALL | MINOR EVENT MODE



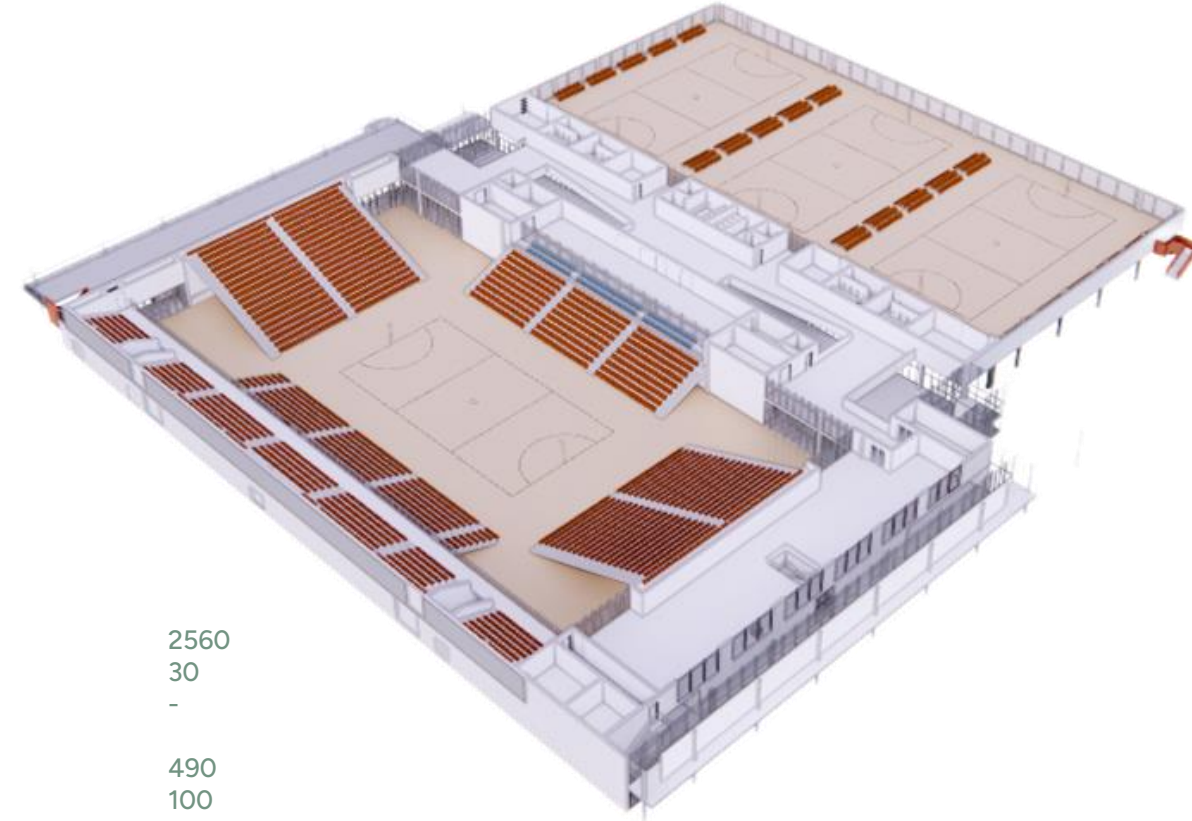
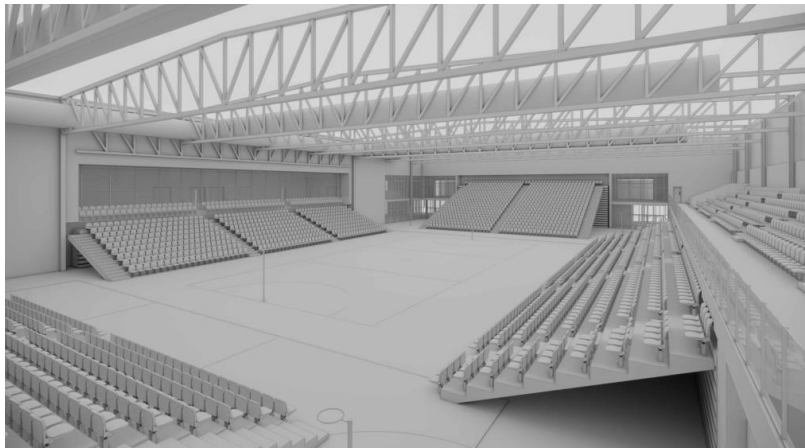
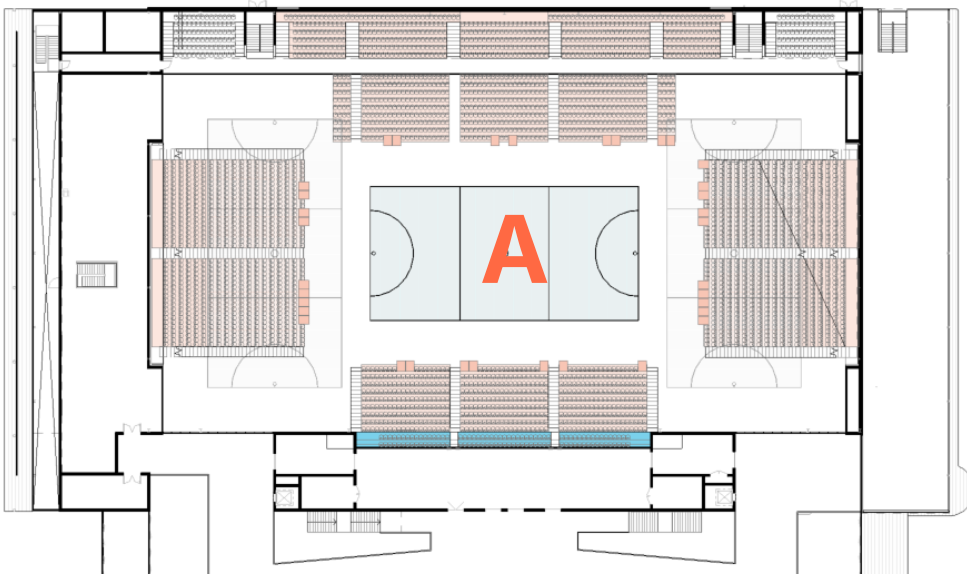
## Court Hall A

Ground	
Retractable	2630
DDA	30
Portable	-
First Floor	
Fixed Gallery	490
Function Seating	100
<b>TOTAL SEATS</b>	<b>2215</b>





# NETBALL | MAJOR EVENT MODE



## Court Hall A

<b>Ground</b>		
Retractable		2560
DDA		30
Portable		-
<b>First Floor</b>		
Fixed Gallery		490
Function Seating		100
DDA		10
<b>TOTAL SEATS</b>		<b>3190</b>



# BIRDSEYE VIEW

OUTDOOR COURTS



COURT HALL A



PLAZA

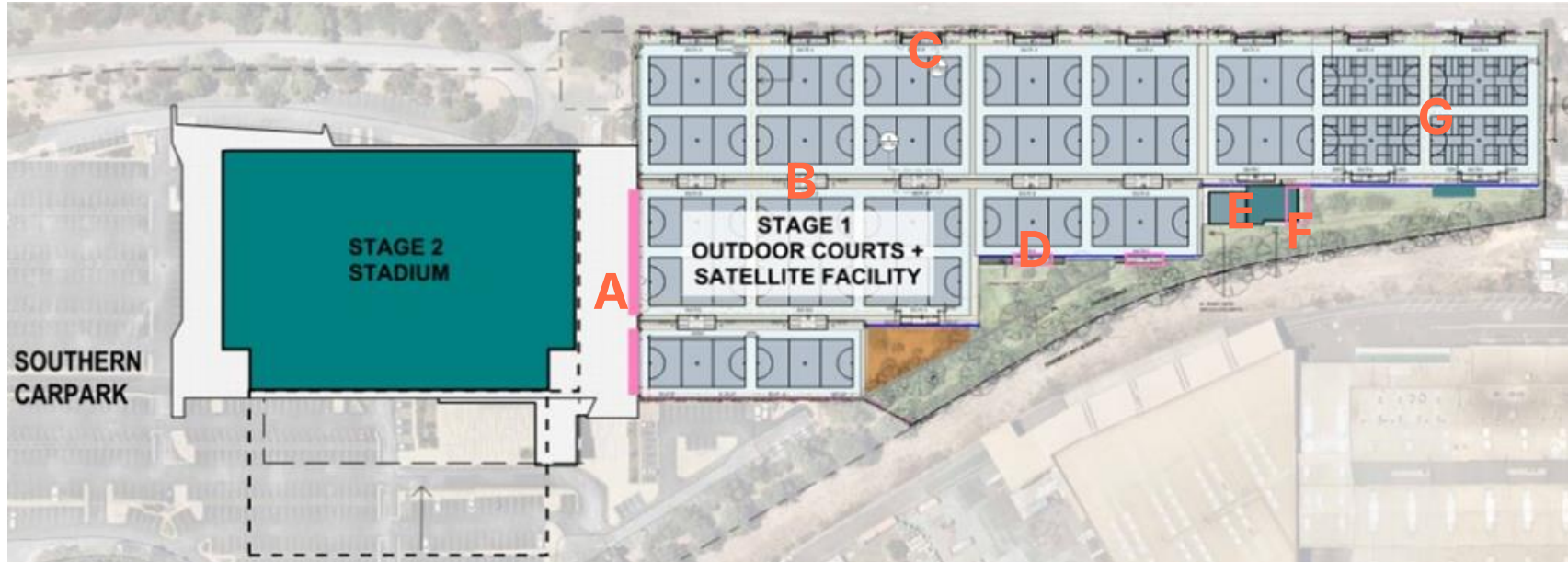


COURT HALL B

UNDERCROFT  
CAR PARK  
ENTRY

MAIN ENTRANCE

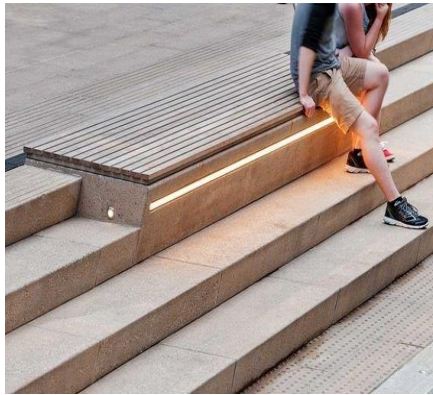
# SITE OVERVIEW



- A TERRACED SEATING
- B DOUBLE PLAYERS & SCORERS SHELTER
- C SINGLE PLAYERS & SCORERS SHELTER
- D SPECTATOR SEATS
- E SATELLITE FOOD AND BEVERAGE FACILITY
- F OUTDOOR SEATING AREA
- G NETBALL/PICKLEBALL COURTS



A TERRACED SEATING



E SATELLITE FOOD AND BEVERAGE FACILITY



# COURT SURFACE & SHELTERS



**B** DOUBLE PLAYERS & SCORERS SHELTER EXEMPLAR

**C** SINGLE PLAYERS & SCORERS SHELTER EXEMPLAR



# OPERATIONAL CONTINUITY

**Purpose:** To ensure that the Netball South Australia (NSA) and affiliated competitions, events, and activities, alongside other tenant/hirers operations at the SA Netball Centre, can continue with minimal disruption during the planned redevelopment of the facility.

Competition	Season Dates (effected)	Alternate Venue
City Night Division	October 2025 – April 2026	Park 22, Anzac Highway
SAMMNA	October 2025 – April 2026 October 2026 – April 2027 October 2027 – December 2027	Options under negotiation
Premier League	April 2026 – August 2026 April 2027 – August 2027	Options under negotiation
Adelaide Metropolitan Netball Division	April 2026 – September 2026 April 2027 – September 2027	Stage 1 courts available Indoor programming TBC
Masters competition	Year round	Options under negotiation
Country Championships	June long weekend 2026 June long weekend 2027	Stage 1 courts available Indoor programming TBC